

# LM5050-2EVAL Evaluation Board

National Semiconductor  
Application Note 2051  
Donald P. Jones  
November 1, 2010



## Introduction

The LM5050-2 evaluation board is designed to demonstrate the capabilities of the LM5050-2 OR-ing Diode Controller. It is intended for evaluation of the functions of the LM5050-2. One high side N-channel power MOSFET is used. The LM5050-2 evaluation board schematic is shown in [Figure 5](#). The evaluation board is designed to highlight applications with a small solution size. For more information about the LM5050-2 functional and electrical characteristics, refer to the LM5050-2 datasheet.

## Operating Range

- Minimum Input Voltage, 6V
- Maximum Input Voltage, 50V
- Output Current Range: 0A to 15A
- Ambient Temperature Range 0°C to 50°C
- Board Size 1.50 inches x 2.25 inches

To aid in the demonstration and evaluation of high-side OR-ing diode controller solution based on the LM5050-2.

The load current capability is limited at 15A by the ratings of the terminals and the PCB copper area and weight. The PCB layout has not been tested for currents above 15A, so this should only be done with some degree of caution.

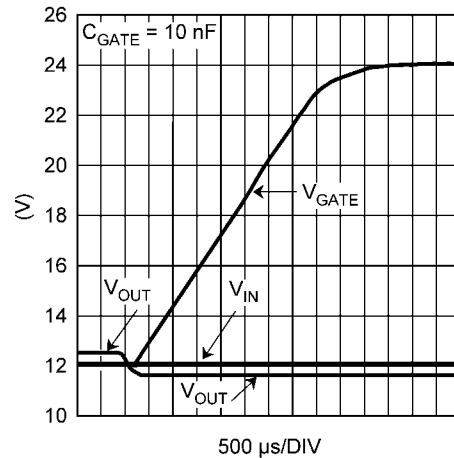
The maximum input voltage is limited by the breakdown voltage rating of both D1 and D2.

Typical evaluation board performance and characteristics curves are shown in through . The PCB layout is shown in and . Test points are provided for optional control and signal monitoring.

## Evaluation Board Start-Up

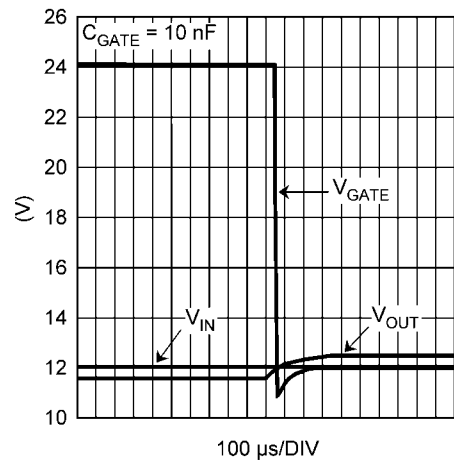
Before applying power to the LM5050-2 evaluation board, all external connections should be verified. The external power supply must be turned off and connected with proper polarity to the VIN, VOUT, and GND terminals. Under basic evaluation conditions the nPGD, V<sub>LOGIC</sub>, and Off test points are left open.

The evaluation board will be in the normal operating mode when power is applied. The Off terminal is used only when there is a desire to disable normal operation and invoke the MOSFET test comparator.



30121312

FIGURE 1. Forward Waveforms



30121313

FIGURE 2. Reverse Waveforms

## Inductive Kick-Back Protection

Diode D1 and capacitor C1 serve as inductive kick-back protection to limit negative transient voltage spikes generated on the input when the input supply voltage is abruptly taken to zero volts.

Diode D2 and capacitor C2 serve as inductive kick-back protection to limit positive transient voltage spikes generated on the output when the input supply voltage is abruptly taken to zero volts.

## Off Test Point

The Off test point provided on the LM5050-2 evaluation board is used to control the LM5050-2 operation. The Off test point is connected directly to the LM5050-2 OFF pin. See the LM5050 datasheet for more details.

To enable the LM5050-2 apply a voltage less than 0.8V to the Off test point, connect the Off test point to GND, or leave the Off test point open (default). If the Off test point is left open, the LM5050-2 OFF pin internal pull-down will ensure that the LM5050-2 becomes operational.

To disable the LM5050-2 apply a voltage greater than 2.0V to the Off test point.

## $V_{\text{LOGIC}}$ Test Point

An external voltage is applied to the  $V_{\text{LOGIC}}$  test point so that the logical output of the Status test point can be evaluated. The  $V_{\text{LOGIC}}$  pin is connected to the LM5050-2 nFGD pin through a 10 k $\Omega$  pull-up resistor. The voltage applied to the  $V_{\text{LOGIC}}$  test point should be between 3.0V and 5.5V.

## Status (nPGD) Test Point

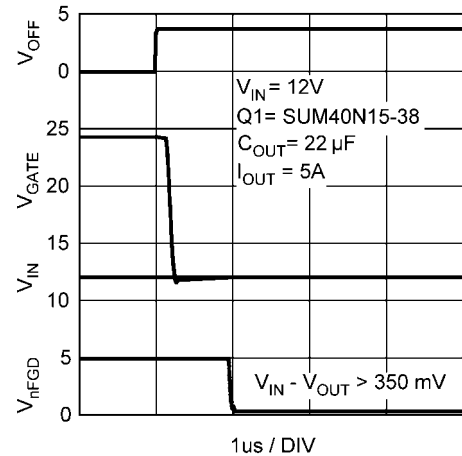
The nPGD test point is wired directly to the LM5050-2 open-drain nFGD pin (device pin 1), with pull-up bias from the  $V_{\text{LOGIC}}$  test point through a 10 k $\Omega$  pull-up resistor.

While the Off test point is low, or open, the nFGD pin will be in a high impedance state and the nPGD test point voltage will be at a logic high.

When the Off test point is high, the MOSFET Gate drive is OFF. If the MOSFET is normal, current will begin flowing

through the body diode and the voltage difference between the IN pin and the OUT pin will be greater than the  $V_{\text{DS(TST)}}$  threshold of typically 350 mV. In this case the nFGD pin will go to a low impedance state and the nPGD test point voltage will be at a logic low..

If the MOSFET is shorted, the voltage difference between the IN pin and the OUT pin will be less than the  $V_{\text{DS(TST)}}$  threshold of typically 350 mV. In this case the nFGD pin will remain in a high impedance state and the nPGD test point voltage will remain at a logic high.



30121316

FIGURE 3. MOSFET Test, No Fault

There are several factors that may prevent the nFGD pin from going to a logic low in an otherwise good application. If there is a redundant, parallel, supply in operation, that supply may hold the OUT pin voltage close enough to the IN pin voltage that the  $V_{\text{DS(TST)}}$  threshold is not exceeded. Additionally, a high output capacitance value, or a low load current, may require that a significant amount of time be allowed for the output capacitance to discharge to the point where the  $V_{\text{DS(TST)}}$  threshold is exceeded and the nFGD pin goes low.

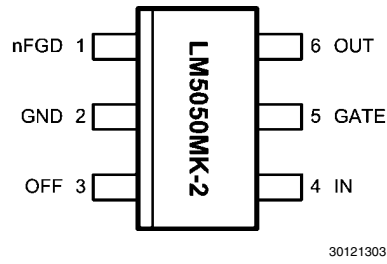


FIGURE 4. Connection Diagram

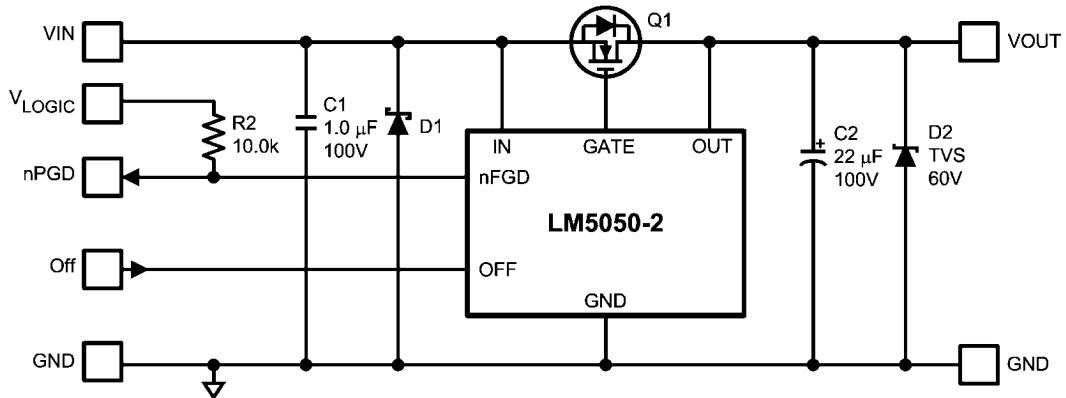


FIGURE 5. Schematic Diagram

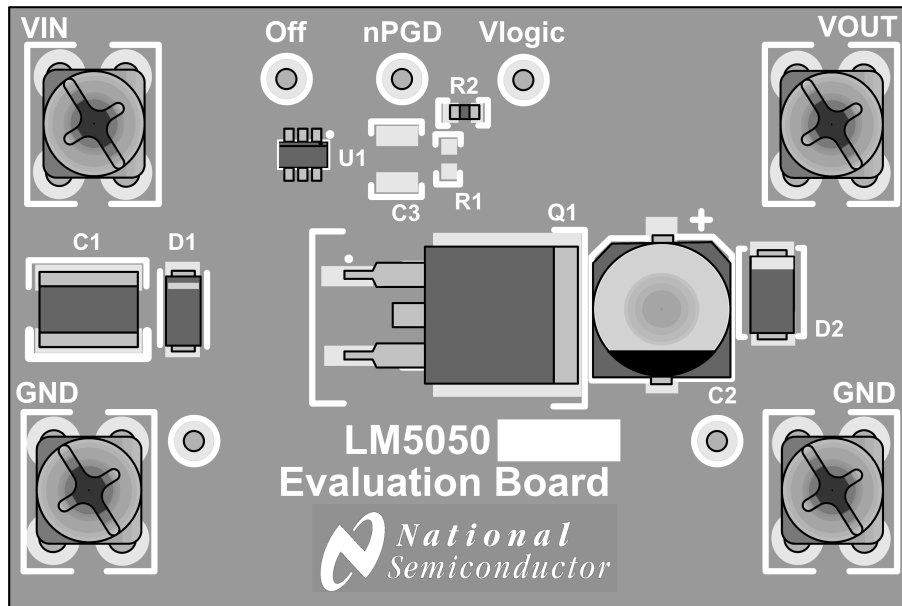
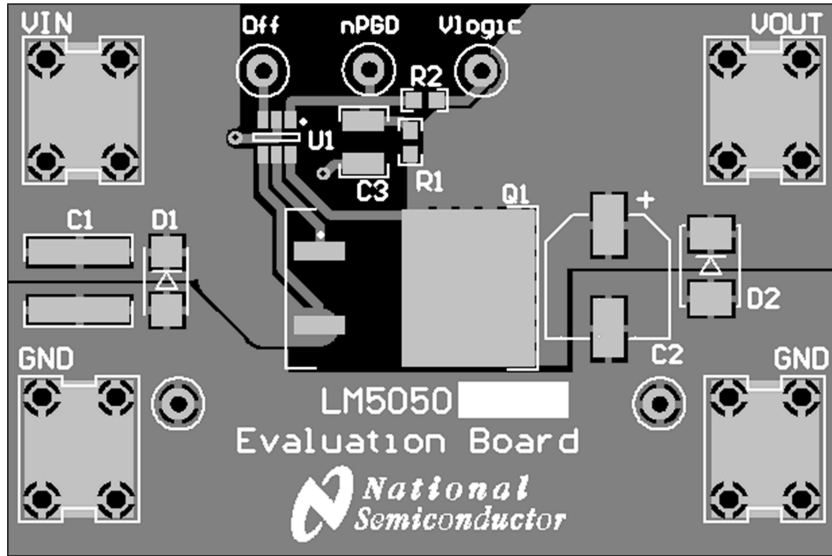


FIGURE 6. Component Placement



30121305

FIGURE 7. Evaluation Board, Top Side (Component)



30121306

FIGURE 8. Evaluation Board, Bottom Side

## Bill of Materials

ID	Description	Manufacturer	Mfgr Part Number
U1	IC; Ideal OR-ing Diode Controller	National Semiconductor Corporation	LM5050MK-2
C1	Capacitor: MLCC; 1.0 $\mu$ F; $\pm$ 10%; 100V; X7R; 1825	Vishay/Vitramon	VJ1825Y105KBBAT4X
C2	Capacitor: 22 $\mu$ F; $\pm$ 20%; 100V; Aluminum Electrolytic; SMT	Panasonic/ECG	EEE-HA2A220P
C3	Not Installed	-	-
D1	Diode: Schottky Barrier Rectifier; 1A; 60V; SMA	ON Semiconductor	SS16T3G
		Micro Commercial Components	SS16-TP
D2	Diode: TVS; Unidirectional; 600W; 60V; SMB	Diodes Inc	SMBJ60A-13-F
Q1	MOSFET: N-Channel; 100V; 40A; 0.025 $\Omega$ ; D <sup>2</sup> PAK	Vishay/Siliconix	SUM40N10-30-E3
R1	Not Installed	-	-
R2	Resistor: 10.0 k $\Omega$ ; 0.10W; $\pm$ 1%; 100ppm; Thick Film; 0603	Vishay/Dale	CRCW060310K0FKEA
		ROHM Semiconductor	MCR03EZPFX1002
VIN	Terminal: 6-32 Screw; Vertical; Snap-In PCB Mount; 15A	Keystone Electronics	7693
VOUT			
GND			
GND			
Off	Test Point Terminal: 0.040in Dia Mtg Hole; White	Keystone Electronics	5012
nPGD			
V <sub>LOGIC</sub>			
GND			
GND			

## Notes

For more National Semiconductor product information and proven design tools, visit the following Web sites at:  
[www.national.com](http://www.national.com)

Products		Design Support	
Amplifiers	<a href="http://www.national.com/amplifiers">www.national.com/amplifiers</a>	WEBENCH® Tools	<a href="http://www.national.com/webench">www.national.com/webench</a>
Audio	<a href="http://www.national.com/audio">www.national.com/audio</a>	App Notes	<a href="http://www.national.com/appnotes">www.national.com/appnotes</a>
Clock and Timing	<a href="http://www.national.com/timing">www.national.com/timing</a>	Reference Designs	<a href="http://www.national.com/refdesigns">www.national.com/refdesigns</a>
Data Converters	<a href="http://www.national.com/adc">www.national.com/adc</a>	Samples	<a href="http://www.national.com/samples">www.national.com/samples</a>
Interface	<a href="http://www.national.com/interface">www.national.com/interface</a>	Eval Boards	<a href="http://www.national.com/evalboards">www.national.com/evalboards</a>
LVDS	<a href="http://www.national.com/lvds">www.national.com/lvds</a>	Packaging	<a href="http://www.national.com/packaging">www.national.com/packaging</a>
Power Management	<a href="http://www.national.com/power">www.national.com/power</a>	Green Compliance	<a href="http://www.national.com/quality/green">www.national.com/quality/green</a>
Switching Regulators	<a href="http://www.national.com/switchers">www.national.com/switchers</a>	Distributors	<a href="http://www.national.com/contacts">www.national.com/contacts</a>
LDOs	<a href="http://www.national.com/ldo">www.national.com/ldo</a>	Quality and Reliability	<a href="http://www.national.com/quality">www.national.com/quality</a>
LED Lighting	<a href="http://www.national.com/led">www.national.com/led</a>	Feedback/Support	<a href="http://www.national.com/feedback">www.national.com/feedback</a>
Voltage References	<a href="http://www.national.com/vref">www.national.com/vref</a>	Design Made Easy	<a href="http://www.national.com/easy">www.national.com/easy</a>
PowerWise® Solutions	<a href="http://www.national.com/powerwise">www.national.com/powerwise</a>	Applications & Markets	<a href="http://www.national.com/solutions">www.national.com/solutions</a>
Serial Digital Interface (SDI)	<a href="http://www.national.com/sdi">www.national.com/sdi</a>	Mil/Aero	<a href="http://www.national.com/milaero">www.national.com/milaero</a>
Temperature Sensors	<a href="http://www.national.com/tempensors">www.national.com/tempensors</a>	SolarMagic™	<a href="http://www.national.com/solarmagic">www.national.com/solarmagic</a>
PLL/VCO	<a href="http://www.national.com/wireless">www.national.com/wireless</a>	PowerWise® Design University	<a href="http://www.national.com/training">www.national.com/training</a>

THE CONTENTS OF THIS DOCUMENT ARE PROVIDED IN CONNECTION WITH NATIONAL SEMICONDUCTOR CORPORATION ("NATIONAL") PRODUCTS. NATIONAL MAKES NO REPRESENTATIONS OR WARRANTIES WITH RESPECT TO THE ACCURACY OR COMPLETENESS OF THE CONTENTS OF THIS PUBLICATION AND RESERVES THE RIGHT TO MAKE CHANGES TO SPECIFICATIONS AND PRODUCT DESCRIPTIONS AT ANY TIME WITHOUT NOTICE. NO LICENSE, WHETHER EXPRESS, IMPLIED, ARISING BY ESTOPPEL OR OTHERWISE, TO ANY INTELLECTUAL PROPERTY RIGHTS IS GRANTED BY THIS DOCUMENT.

TESTING AND OTHER QUALITY CONTROLS ARE USED TO THE EXTENT NATIONAL DEEMS NECESSARY TO SUPPORT NATIONAL'S PRODUCT WARRANTY. EXCEPT WHERE MANDATED BY GOVERNMENT REQUIREMENTS, TESTING OF ALL PARAMETERS OF EACH PRODUCT IS NOT NECESSARILY PERFORMED. NATIONAL ASSUMES NO LIABILITY FOR APPLICATIONS ASSISTANCE OR BUYER PRODUCT DESIGN. BUYERS ARE RESPONSIBLE FOR THEIR PRODUCTS AND APPLICATIONS USING NATIONAL COMPONENTS. PRIOR TO USING OR DISTRIBUTING ANY PRODUCTS THAT INCLUDE NATIONAL COMPONENTS, BUYERS SHOULD PROVIDE ADEQUATE DESIGN, TESTING AND OPERATING SAFEGUARDS.

EXCEPT AS PROVIDED IN NATIONAL'S TERMS AND CONDITIONS OF SALE FOR SUCH PRODUCTS, NATIONAL ASSUMES NO LIABILITY WHATSOEVER, AND NATIONAL DISCLAIMS ANY EXPRESS OR IMPLIED WARRANTY RELATING TO THE SALE AND/OR USE OF NATIONAL PRODUCTS INCLUDING LIABILITY OR WARRANTIES RELATING TO FITNESS FOR A PARTICULAR PURPOSE, MERCHANTABILITY, OR INFRINGEMENT OF ANY PATENT, COPYRIGHT OR OTHER INTELLECTUAL PROPERTY RIGHT.

#### LIFE SUPPORT POLICY

**NATIONAL'S PRODUCTS ARE NOT AUTHORIZED FOR USE AS CRITICAL COMPONENTS IN LIFE SUPPORT DEVICES OR SYSTEMS WITHOUT THE EXPRESS PRIOR WRITTEN APPROVAL OF THE CHIEF EXECUTIVE OFFICER AND GENERAL COUNSEL OF NATIONAL SEMICONDUCTOR CORPORATION.** As used herein:

Life support devices or systems are devices which (a) are intended for surgical implant into the body, or (b) support or sustain life and whose failure to perform when properly used in accordance with instructions for use provided in the labeling can be reasonably expected to result in a significant injury to the user. A critical component is any component in a life support device or system whose failure to perform can be reasonably expected to cause the failure of the life support device or system or to affect its safety or effectiveness.

National Semiconductor and the National Semiconductor logo are registered trademarks of National Semiconductor Corporation. All other brand or product names may be trademarks or registered trademarks of their respective holders.

Copyright© 2010 National Semiconductor Corporation

For the most current product information visit us at [www.national.com](http://www.national.com)



**National Semiconductor**  
**Americas Technical**  
**Support Center**  
 Email: [support@nsc.com](mailto:support@nsc.com)  
 Tel: 1-800-272-9959

**National Semiconductor Europe**  
**Technical Support Center**  
 Email: [europe.support@nsc.com](mailto:europe.support@nsc.com)

**National Semiconductor Asia**  
**Pacific Technical Support Center**  
 Email: [ap.support@nsc.com](mailto:ap.support@nsc.com)

**National Semiconductor Japan**  
**Technical Support Center**  
 Email: [jpn.feedback@nsc.com](mailto:jpn.feedback@nsc.com)