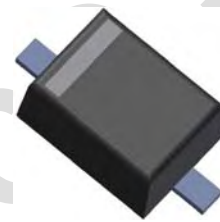


200mW SOD-323 SURFACE MOUNT Small Outline Flat Lead Plastic Package High Speed Switching Diode

Absolute Maximum Ratings T_A = 25°C unless otherwise noted

Symbol	Parameter	Value	Units
P _D	Power Dissipation	200	mW
T _{STG}	Storage Temperature Range	-65 to +150	°C
T _J	Operating Junction Temperature	+150	°C
V _R	Reverse Voltage	80	V
V _{RM}	Repetitive Peak Reverse Voltage	90	V
I _{FM}	Forward Current	250	mA
I _O	Continuous Forward Current	150	mA
I _{FRM}	Repetitive Peak Forward Current	500	mA

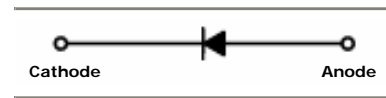
These ratings are limiting values above which the serviceability of the diode may be impaired.



SOD-323 Flat Lead

Specification Features:

- High Speed Switching Device (T_{RR} <4.0 nS)
- General Purpose Diodes
- Flat Lead SOD-323 Small Outline Plastic Package
- Surface Device Type Mounting
- Moisture Sensitivity Level 1
- Clip Bonding Construction, Good Thermal Capability
- Pb Free Version and RoHS Compliant
- Matte Tin(Sn) Lead Finish with Nickel(Ni) Underplate
- Band Indicates Cathode

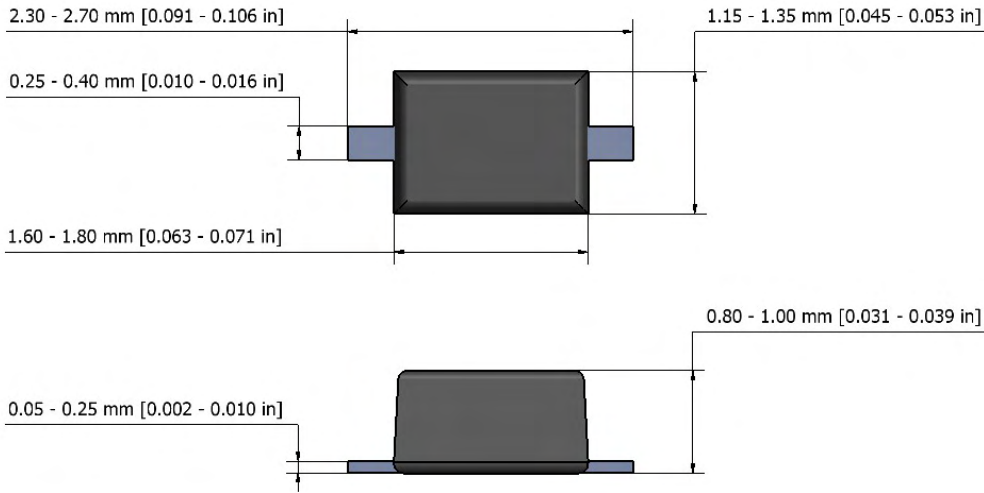


ELECTRICAL SYMBOL

Electrical Characteristics T_A = 25°C unless otherwise noted

Symbol	Parameter	Test Condition	Limits		Unit
			Min	Max	
B _V	Breakdown Voltage	I _R =100μA	80		Volts
I _R	Reverse Leakage Current	V _R =80V		100	nA
V _F	Forward Voltage	I _F =100mA		1.2	Volts
T _{RR}	Reverse Recovery Time	I _F =10mA V _R =6V R _L =100Ω		4	nS
C	Capacitance	V _R =0.5V, f=1MHz		4	pF

SOD-323 Package Outline



NOTE: The above package outline is similar to JEITA SC-90.

DEVICE MARKING CODES:

Device Type	Device Marking
BAS216	S4