

$I_{F(AV)} = 30\text{Amp}$   
 $V_R = 60\text{V}$

**Major Ratings and Characteristics**

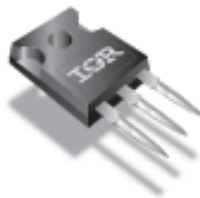
Characteristics	Value	Units
$I_{F(AV)}$ Rectangular waveform	30	A
$V_{RRM}$	60	V
$I_{FSM}$ @tp = 5 $\mu$ s sine	1020	A
$V_F$ @ 15 Apk, $T_J=125^\circ\text{C}$ (per leg)	0.56	V
$T_J$	-55 to 150	$^\circ\text{C}$

**Description/ Features**

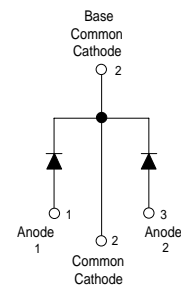
The STPS30L60CW center tap Schottky rectifier has been optimized for very low forward voltage drop, with moderate leakage. The proprietary barrier technology allows for reliable operation up to 150° C junction temperature. Typical applications are in switching power supplies, converters, free-wheeling diodes, and reverse battery protection.

- 150° C  $T_J$  operation
- Center tap TO-247 package
- High purity, high temperature epoxy encapsulation for enhanced mechanical strength and moisture resistance
- Very low forward voltage drop
- High frequency operation
- Guard ring for enhanced ruggedness and long term reliability

**Case Styles**



TO-247AC



# STPS30L60CW

Bulletin PD-20625 rev. A 10/06



## Voltage Ratings

Part number	STPS30L60CW
$V_R$ Max. DC Reverse Voltage (V)	60
$V_{RWM}$ Max. Working Peak Reverse Voltage (V)	

## Absolute Maximum Ratings

Parameters	Value	Units	Conditions
$I_{F(AV)}$ Max. Average Forward Current * See Fig. 5	30	A	50% duty cycle @ $T_C = 112^\circ\text{C}$ , rectangular wave form
$I_{FSM}$ Max. Peak One Cycle Non-Repetitive Surge Current (Per Leg) * See Fig. 7	1020	A	Following any rated load condition and with rated $V_{RWM}$ applied
	265		
$E_{AS}$ Non-Repetitive Avalanche Energy (Per Leg)	13	mJ	$T_J = 25^\circ\text{C}$ , $I_{AS} = 1.50$ Amps, $L = 11.5$ mH
$I_{AR}$ Repetitive Avalanche Current (Per Leg)	1.50	A	Current decaying linearly to zero in 1 $\mu\text{sec}$ Frequency limited by $T_J$ max. $V_A = 1.5 \times V_R$ typical

## Electrical Specifications

Parameters	Value	Units	Conditions
$V_{FM}$ Max. Forward Voltage Drop (Per Leg) * See Fig. 1 (1)		0.60	V @ 15A, $T_J = 25^\circ\text{C}$
		0.80	V @ 30A
		0.56	V @ 15A
		0.70	V @ 30A
$I_{RM}$ Max. Reverse Leakage Current (Per Leg) * See Fig. 2 (1)		0.48	mA, $T_J = 25^\circ\text{C}$
		50 (typ)	mA, $T_J = 125^\circ\text{C}$
		100	mA, $T_J = 125^\circ\text{C}$
$C_T$ Max. Junction Capacitance(Per Leg)	720	pF	$V_R = 5V_{DC}$ , (test signal range 100Khz to 1Mhz) $25^\circ\text{C}$
$L_S$ Typical Series Inductance (Per Leg)	7.5	nH	Measured lead to lead 5mm from package body
dv/dt Max. Voltage Rate of Change	10000	V/ $\mu\text{s}$	(Rated $V_R$ )

(1) Pulse Width < 300 $\mu\text{s}$ , Duty Cycle <2%

## Thermal-Mechanical Specifications

Parameters	Value	Units	Conditions
$T_J$ Max. Junction Temperature Range	-55 to 150	$^\circ\text{C}$	
$T_{stg}$ Max. Storage Temperature Range	-55 to 150	$^\circ\text{C}$	
$R_{thJC}$ Max. Thermal Resistance Junction to Case (Per Leg)	2.20	$^\circ\text{C/W}$	DC operation * See Fig. 4
$R_{thJC}$ Max. Thermal Resistance Junction to Case (Per Package)	1.10	$^\circ\text{C/W}$	DC operation
$R_{thCS}$ Typical Thermal Resistance, Case to Heatsink	0.24	$^\circ\text{C/W}$	Mounting surface, smooth and greased
wt Approximate Weight	6 (0.21)	g (oz.)	
T Mounting Torque	Min.	6 (5)	Non-lubricated threads
	Max.	12 (10)	
Case Style	TO-247AC(TO-3P)	JEDEC	

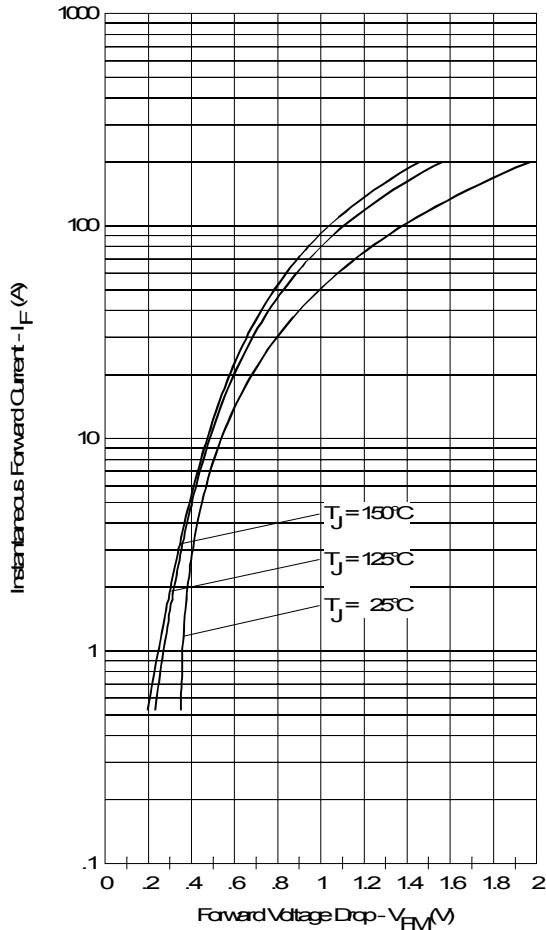


Fig. 1 - Max. Forward Voltage Drop Characteristics (Per Leg)

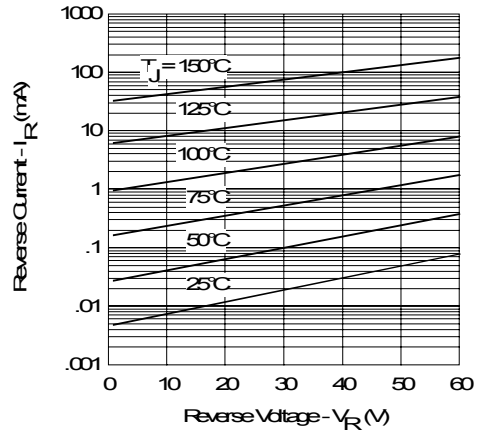


Fig. 2 - Typical Values Of Reverse Current Vs. Reverse Voltage (Per Leg)

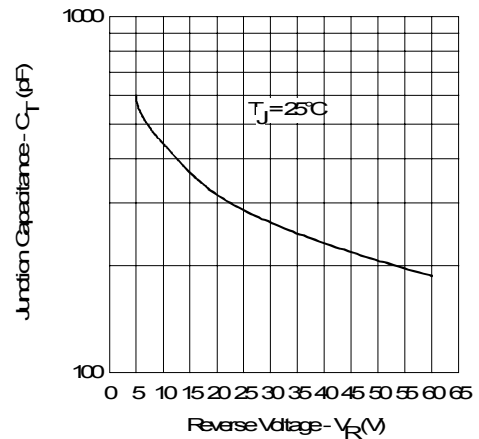


Fig. 3 - Typical Junction Capacitance Vs. Reverse Voltage (Per Leg)

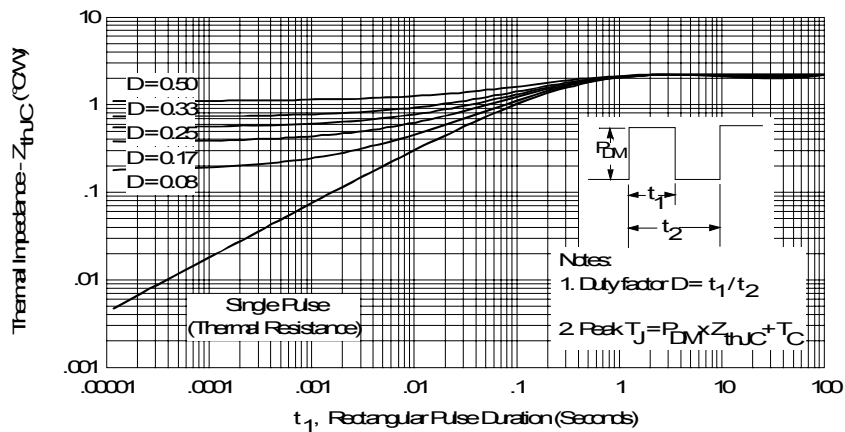


Fig. 4 - Max. Thermal Impedance  $Z_{thJC}$  Characteristics (Per Leg)

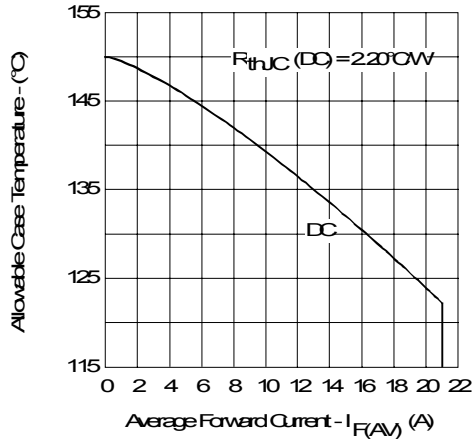


Fig. 5 - Max. Allowable Case Temperature Vs. Average Forward Current (Per Leg)

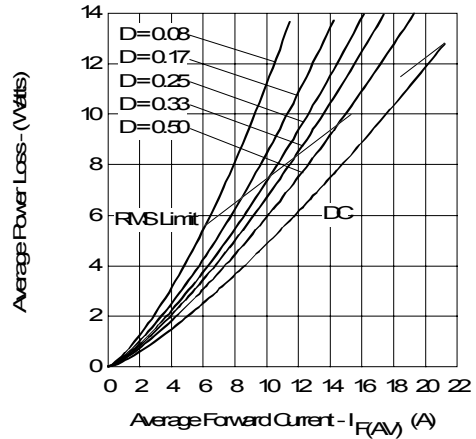


Fig. 6 - Forward Power Loss Characteristics (Per Leg)

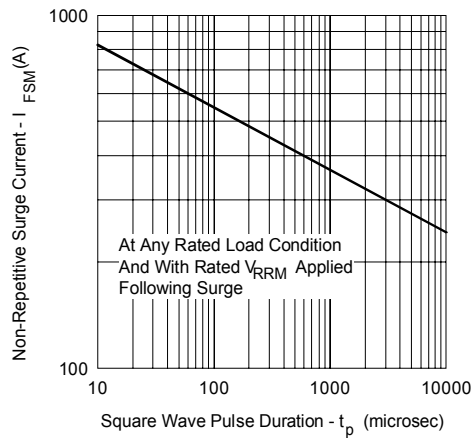


Fig. 7 - Max. Non-Repetitive Surge Current (Per Leg)

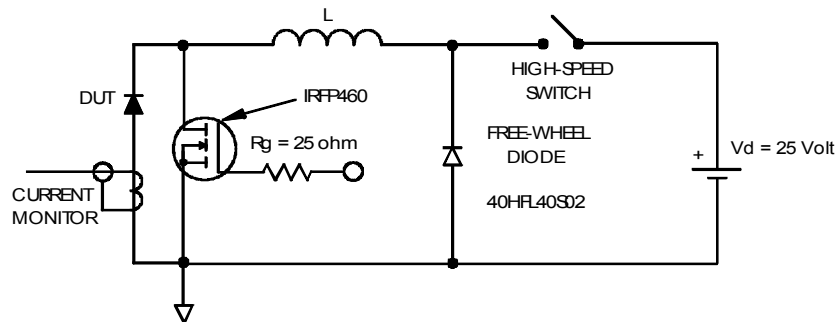


Fig. 8 - Unclamped Inductive Test Circuit

Outline Table

**NOTES:**

1. DIMENSIONING AND TOLERANCING AS PER ASME Y14.5M 1994.
2. DIMENSIONS ARE SHOWN IN INCHES.
3. CONTOUR OF SLOT OPTIONAL.
4. DIMENSION D & E DO NOT INCLUDE MOLD FLASH. MOLD FLASH SHALL NOT EXCEED .005" (0.127) PER SIDE. THESE DIMENSIONS ARE MEASURED AT THE OUTERMOST EXTREMES OF THE PLASTIC BODY.
5. THERMAL PAD CONTOUR OPTIONAL WITHIN DIMENSIONS D1 & E1.
6. LEAD FINISH UNCONTROLLED IN L1.
7. HP TO HAVE A MAXIMUM DRAFT ANGLE OF 1.5° TO THE TOP OF THE PART WITH A MAXIMUM HOLE DIAMETER OF .154 INCH.
8. OUTLINE CONFORMS TO JEDEC OUTLINE TO-247AC.

SYMBOL	DIMENSIONS INCHES		DIMENSIONS MILLIMETERS		NOTES
	MIN.	MAX.	MIN.	MAX.	
A	.183	.209	4.65	5.31	
A1	.087	.102	2.21	2.59	
A2	.059	.096	1.50	2.44	
D	.038	.055	0.95	1.40	
b1	.038	.053	0.95	1.35	
b2	.063	.084	1.63	2.13	
b3	.063	.092	1.63	2.34	
b4	.102	.130	2.59	3.43	
b5	.102	.133	2.59	3.38	
c	.015	.035	0.38	0.89	
c1	.015	.035	0.38	0.89	
D	.778	.815	19.71	20.70	4
D1	.515	-	13.08	-	5
D2	.020	.035	0.51	1.30	
E	.602	.625	15.28	15.87	4
E1	.362	-	9.18	-	
E2	.178	.216	4.52	5.49	
e	.215 BSC	-	5.46 BSC	-	
e1	.075	-	1.91	0.25	
L	.559	.634	14.20	16.10	
L1	.146	.189	3.71	4.79	
HP	.142	.184	3.56	4.68	
HP1	-	.281	-	7.13	
D	.208	.224	5.31	5.69	
s	.217 BSC	-	5.51 BSC	-	

**LEAD ASSIGNMENTS**

- 1- GATE
- 2- DRAIN
- 3- SOURCE
- 4- DRAIN

**SLOT CAPACITY**

- 1- GATE
- 2- COLLECTOR
- 3- BARRIER
- 4- COLLECTOR

**DOCKS**

- 1- ANODE/OPEN
- 2- CATHODE
- 3- ANODE

**Conform to JEDEC outline TO-247AC (TO-3P)**  
Dimensions in millimeters and (inches)

Marking Information

EXAMPLE: THIS IS A STPS30L60CW WITH ASSEMBLY LOT CODE 5657 ASSEMBLED ON WW 35, 2000 IN ASSEMBLY LINE "H"

INTERNATIONAL RECTIFIER LOGO

ASSEMBLY LOT CODE

PART NUMBER

DATE CODE  
YEAR 0 = 2000  
WEEK 35  
LINE H

## Ordering Information Table

Device Code													
	<table border="1" style="margin: auto;"> <tr> <td style="padding: 5px;">STPS</td> <td style="padding: 5px;">30</td> <td style="padding: 5px;">L</td> <td style="padding: 5px;">60</td> <td style="padding: 5px;">CW</td> <td style="padding: 5px;">-</td> </tr> <tr> <td style="text-align: center;">①</td> <td style="text-align: center;">②</td> <td style="text-align: center;">③</td> <td style="text-align: center;">④</td> <td style="text-align: center;">⑤</td> <td style="text-align: center;">⑥</td> </tr> </table>	STPS	30	L	60	CW	-	①	②	③	④	⑤	⑥
STPS	30	L	60	CW	-								
①	②	③	④	⑤	⑥								
<b>1</b>	- Schottky STPS Series												
<b>2</b>	- Current Ratings (30 = 30A)												
<b>3</b>	- L = Low Forward Voltage												
<b>4</b>	- Voltage Code (60 = 60V)												
<b>5</b>	- Package CW = TO-247												
<b>6</b>	- <ul style="list-style-type: none"> <li>• none = Standard Production</li> <li>• PbF = Lead-Free</li> </ul>												
Tube Standard Pack Quantity : 25 pieces													

Data and specifications subject to change without notice.  
This product has been designed and qualified for Industrial Level.  
Qualification Standards can be found on IR's Web site.

International  
**IR** Rectifier

**IR WORLD HEADQUARTERS:** 233 Kansas St., El Segundo, California 90245, USA Tel: (310) 252-7105  
TAC Fax: (310) 252-7309  
10/06



## Notice

The products described herein were acquired by Vishay Intertechnology, Inc., as part of its acquisition of International Rectifier's Power Control Systems (PCS) business, which closed in April 2007. Specifications of the products displayed herein are pending review by Vishay and are subject to the terms and conditions shown below.

Specifications of the products displayed herein are subject to change without notice. Vishay Intertechnology, Inc., or anyone on its behalf, assumes no responsibility or liability for any errors or inaccuracies.

Information contained herein is intended to provide a product description only. No license, express or implied, by estoppel or otherwise, to any intellectual property rights is granted by this document. Except as provided in Vishay's terms and conditions of sale for such products, Vishay assumes no liability whatsoever, and disclaims any express or implied warranty, relating to sale and/or use of Vishay products including liability or warranties relating to fitness for a particular purpose, merchantability, or infringement of any patent, copyright, or other intellectual property right.

The products shown herein are not designed for use in medical, life-saving, or life-sustaining applications. Customers using or selling these products for use in such applications do so at their own risk and agree to fully indemnify Vishay for any damages resulting from such improper use or sale.

International Rectifier®, IR®, the IR logo, HEXFET®, HEXSense®, HEXDIP®, DOL®, INTERO®, and POWIRTRAIN® are registered trademarks of International Rectifier Corporation in the U.S. and other countries. All other product names noted herein may be trademarks of their respective owners.