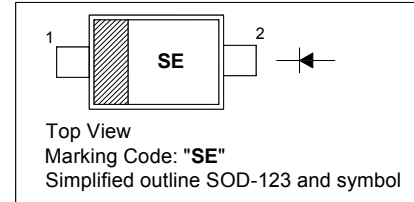


SURFACE MOUNT SCHOTTKY POWER RECTIFIER

PINNING

PIN	DESCRIPTION
1	Cathode
2	Anode



Absolute Maximum Ratings (T_a = 25 °C)

Parameter	Symbol	Value	Unit
Repetitive Peak Reverse Voltage	V _{RRM}	30	V
Non-Repetitive Peak Reverse Voltage	V _{RSM}	30	V
Maximum DC Blocking Voltage	V _R	30	V
Average Forward Rectified Current	I _{F(AV)}	0.5	A
Peak Forward Surge Current (8.3 ms Single Half Sine-wave)	I _{FSM}	5.5	A
Thermal Resistance Junction to Lead	R _{θJL}	150	°C/W
Thermal Resistance Junction to Ambient ¹⁾	R _{θJA}	206	°C/W
Operating Junction Temperature	T _J	- 65 to + 125	°C
Storage Temperature Range	T _{stg}	- 65 to + 125	°C

¹⁾ 1 inch square pad size (1 X 0.5 inch for each lead) on FR4 board

Electrical Characteristics at T_a = 25 °C

Parameter	Symbol	Max.	Unit
Forward Voltage at I _F = 100 mA at I _F = 500 mA	V _F	0.375 0.5	V
Reverse Current at V _R = 30 V at V _R = 15 V	I _R	130 20	μA

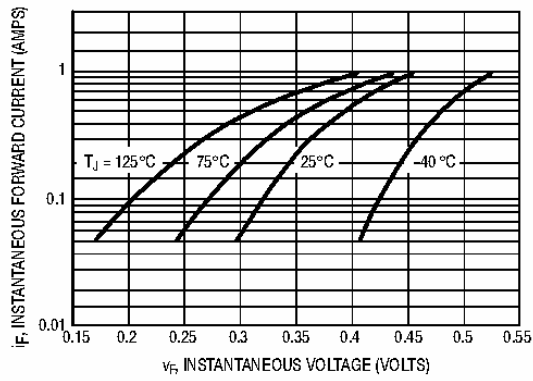


Figure 1. Typical Forward Voltage

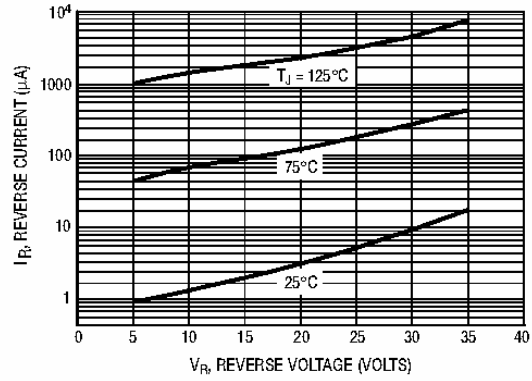


Figure 2. Typical Reverse Current

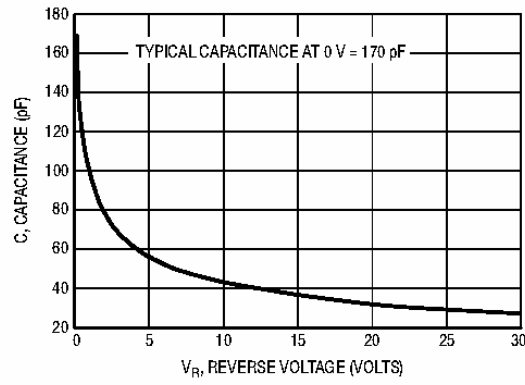
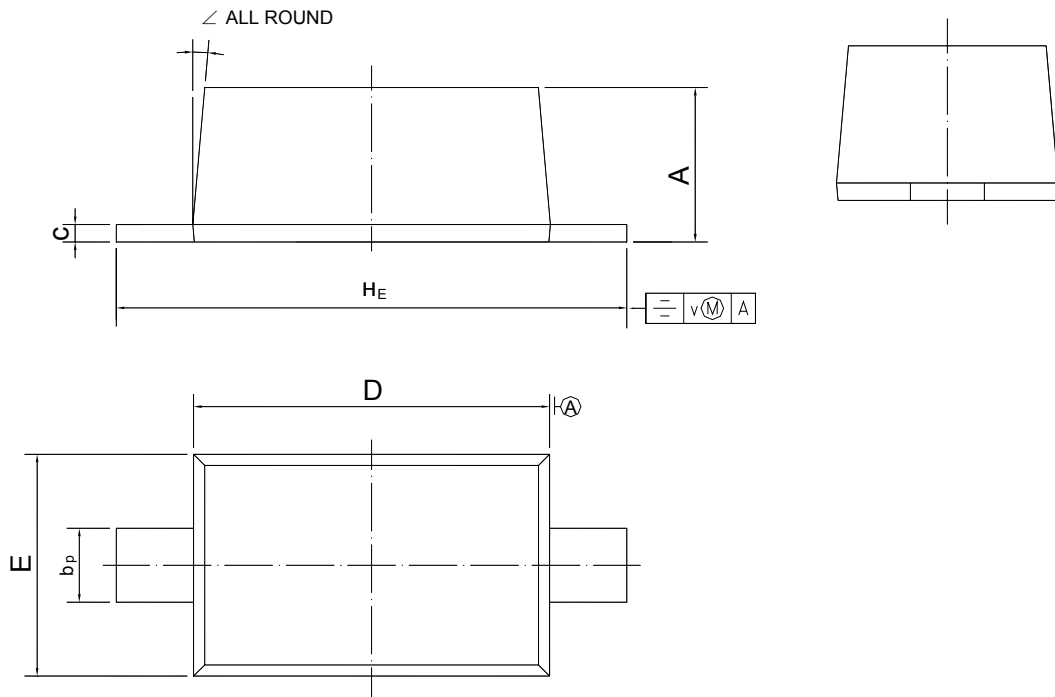


Figure 3. Typical Capacitance

PACKAGE OUTLINE

Plastic surface mounted package; 2 leads

SOD-123



UNIT	A	b _p	c	D	E	H _E	v	∠
mm	1.15 1.05	0.6 0.5	0.135 0.127	2.7 2.6	1.65 1.55	3.9 3.7	0.2	5°