



DONGGUAN NANJING ELECTRONICS LTD.,
SOT-89-3L Plastic-Encapsulate Transistors

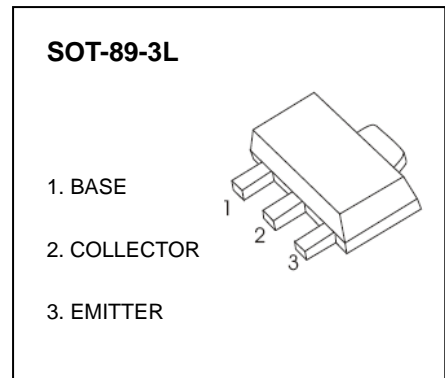
BST39, BST40 TRANSISTOR (NPN)

FEATURES

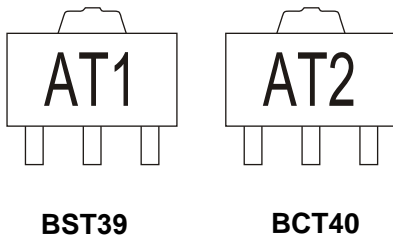
- Low Current
- High Voltage

APPLICATIONS

- General Purpose Switching and Amplification



MARKING



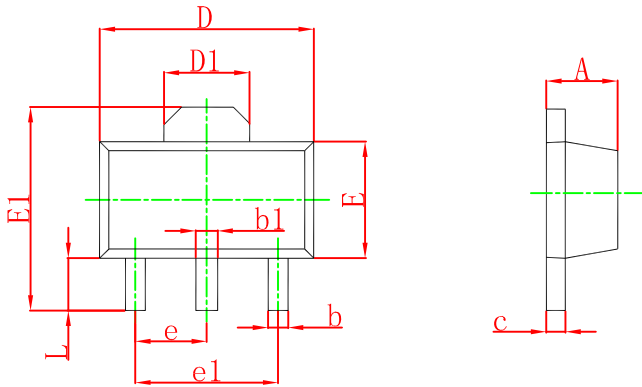
MAXIMUM RATINGS (T_a=25°C unless otherwise noted)

Symbol	Parameter		Value	Unit
V _{CBO}	Collector-Base Voltage	BST39	400	V
		BST40	300	
V _{CEO}	Collector-Emitter Voltage	BST39	350	V
		BST40	250	
V _{EBO}	Emitter-Base Voltage		5	V
I _C	Collector Current		100	mA
P _C	Collector Power Dissipation		500	mW
R _{θJA}	Thermal Resistance From Junction To Ambient		250	°C/W
T _J , T _{stg}	Operation Junction and Storage Temperature Range		-55~+150	°C

ELECTRICAL CHARACTERISTICS (T_a=25°C unless otherwise specified)

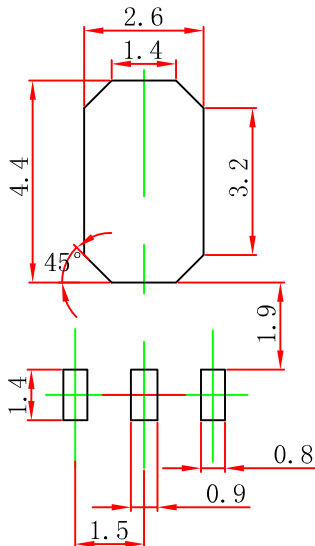
Parameter	Symbol	Test conditions	Min	Typ	Max	Unit
Collector-base breakdown voltage	V _{(BR)CBO}	I _C =100μA, I _E =0	BST39	400		V
			BST40	300		
Collector-emitter breakdown voltage	V _{(BR)CEO}	I _C =1mA, I _B =0	BST39	350		V
			BST40	250		
Emitter-base breakdown voltage	V _{(BR)EBO}	I _E =100μA, I _C =0	5			V
Collector cut-off current	I _{CBO}	V _{CB} =300V, I _E =0			20	nA
Emitter cut-off current	I _{EBO}	V _{EB} =5V, I _C =0			100	nA
DC current gain	h _{FE}	V _{CE} =10V, I _C =20mA		40		
Collector-emitter saturation voltage	V _{CE(sat)}	I _C =50mA, I _B =4mA			0.5	V
Transition frequency	f _T	V _{CE} =10V, I _C =10mA, f=100MHz	70			MHz
Collector output capacitance	C _{ob}	V _{CB} =10V, I _E =0, f=1MHz			2	pF

SOT-89-3L Package Outline Dimensions



Symbol	Dimensions In Millimeters		Dimensions In Inches	
	Min	Max	Min	Max
A	1.400	1.600	0.055	0.063
b	0.320	0.520	0.013	0.020
b1	0.400	0.580	0.016	0.023
c	0.350	0.440	0.014	0.017
D	4.400	4.600	0.173	0.181
D1	1.550 REF.		0.061 REF.	
E	2.300	2.600	0.091	0.102
E1	3.940	4.250	0.155	0.167
e	1.500 TYP.		0.060 TYP.	
e1	3.000 TYP.		0.118 TYP.	
L	0.900	1.200	0.035	0.047

SOT-89-3L Suggested Pad Layout

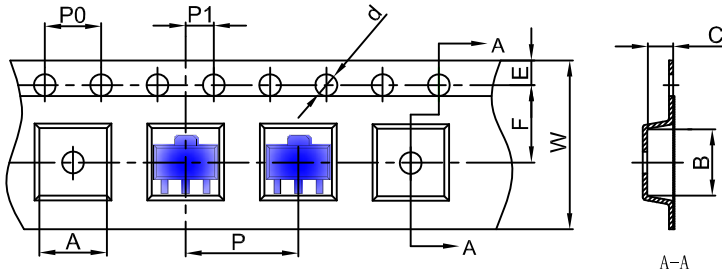


Note:

1. Controlling dimension: in millimeters.
2. General tolerance: ± 0.05 mm.
3. The pad layout is for reference purposes only.

SOT-89-3L Tape and Reel

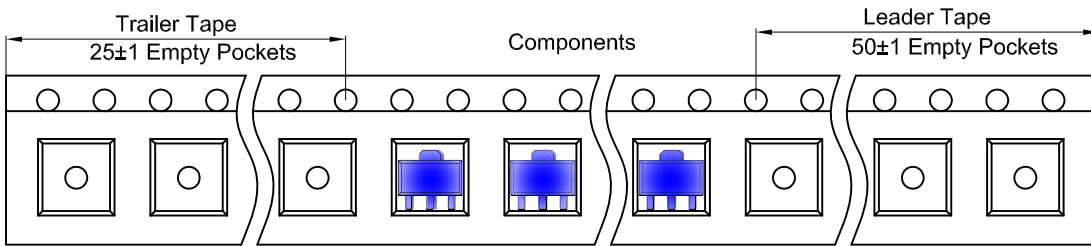
SOT-89-3L Embossed Carrier Tape



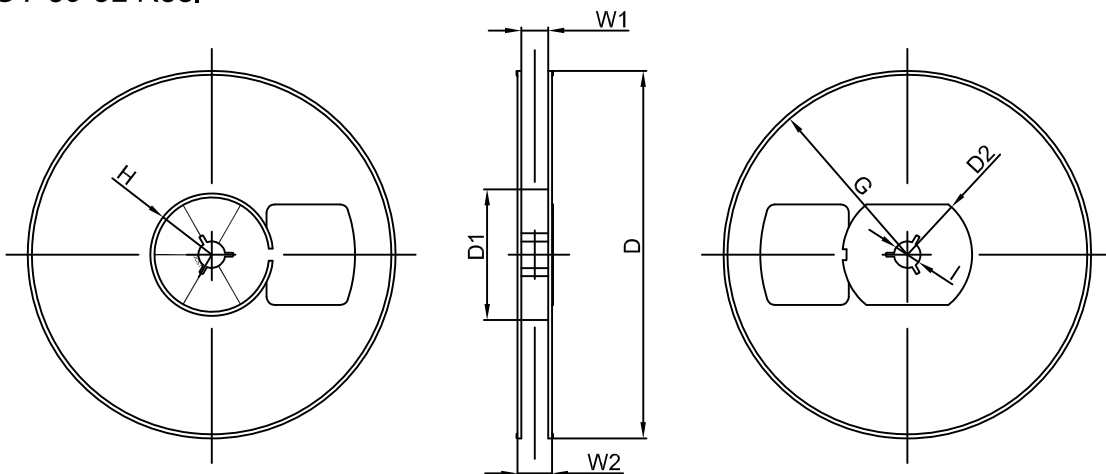
Packaging Description:
 SOT-89-3L parts are shipped in tape. The carrier tape is made from a dissipative (carbon filled) polycarbonate resin. The cover tape is a multilayer film (Heat Activated Adhesive in nature) primarily composed of polyester film, adhesive layer, sealant, and anti-static sprayed agent. These reeled parts in standard option are shipped with 1,000 units per 7" or 18.0 cm diameter reel. The reels are clear in color and is made of polystyrene plastic (anti-static coated).

Dimensions are in millimeter										
Pkg type	A	B	C	d	E	F	P0	P	P1	W
SOT-89-3L	4.85	4.45	1.85	Ø1.50	1.75	5.50	4.00	8.00	2.00	12.00

SOT-89-3L Tape Leader and Trailer



SOT-89-3L Reel



Dimensions are in millimeter								
Reel Option	D	D1	D2	G	H	I	W1	W2
7" Dia	Ø180.00	60.00	R32.00	R86.50	R30.00	Ø13.00	13.20	16.50

REEL	Reel Size	Box	Box Size(mm)	Carton	Carton Size(mm)	G.W.(kg)
1000 pcs	7 inch	10,000 pcs	203×203×195	40,000 pcs	438×438×220	