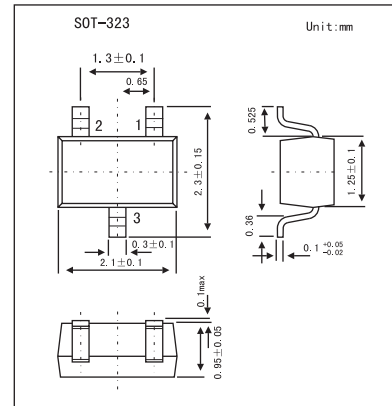


## HIGH SWITCHING DIODE

## 1SS378

## ■ Features

- Low forward voltage:  $V_{F(3)} = 0.23 \text{ V(Typ)}$  @  $I_F = 5 \text{ mA}$

■ Absolute Maximum Ratings  $T_a = 25^\circ\text{C}$ 

Parameter	Symbol	Rating	Unit
Maximum (peak) reverse voltage	$V_{RM}$	85	V
Reverse voltage	$V_R$	80	V
Maximum (peak) forward current	$I_{FM}$	300(*)	mA
Average forward Current	$I_o$	100(*)	mA
Surge current (10 ms)	$I_{FSM}$	2(*)	A
Power dissipation	$P$	100	mW
Junction Temperature	$T_j$	125	$^\circ\text{C}$
Storage Temperature range	$T_{stg}$	-55 to +125	$^\circ\text{C}$
Operating temperature range	$T_{opr}$	-40 to +100	$^\circ\text{C}$

(\*) Unit rating. Total rating = Unit rating  $\times$  1.5

■ Electrical Characteristics  $T_a = 25^\circ\text{C}$ 

Parameter	Symbol	Test Conditions	Min	Typ	Max	Unit
Forward voltage	$V_{F(1)}$	$I_F = 1 \text{ mA}$		0.18		V
	$V_{F(2)}$	$I_F = 5 \text{ mA}$		0.23	0.3	
	$V_{F(3)}$	$I_F = 100 \text{ mA}$		0.35	0.5	
	$I_R$	$V_R = 10 \text{ V}$			20	$\mu\text{A}$
Total capacitance	$C_t$	$V_R = 0, f = 1.0 \text{ MHz}$		20	40	pF

## ■ Marking

Marking	O9
---------	----