



# 1SS314

## Silicon Epitaxial Planar Switching Diode

### Features

- Small plastic package suitable for surface mounted design
- VHF tuner band switch

SOD-323



Marking : TY

### Absolute Maximum Ratings ( $T_a = 25^\circ\text{C}$ )

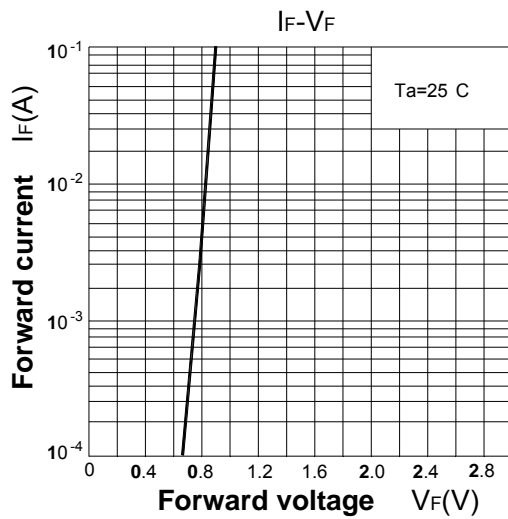
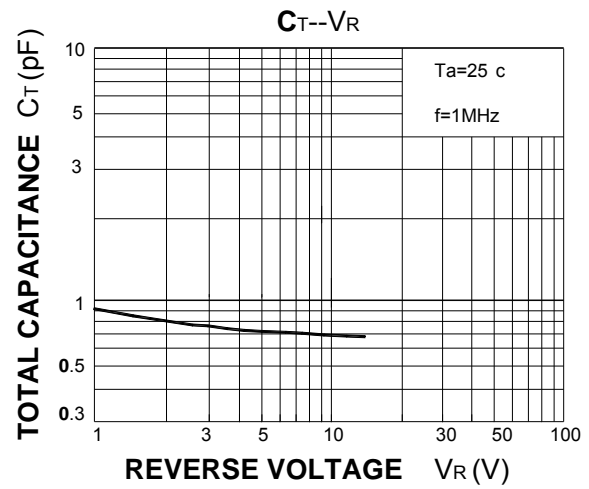
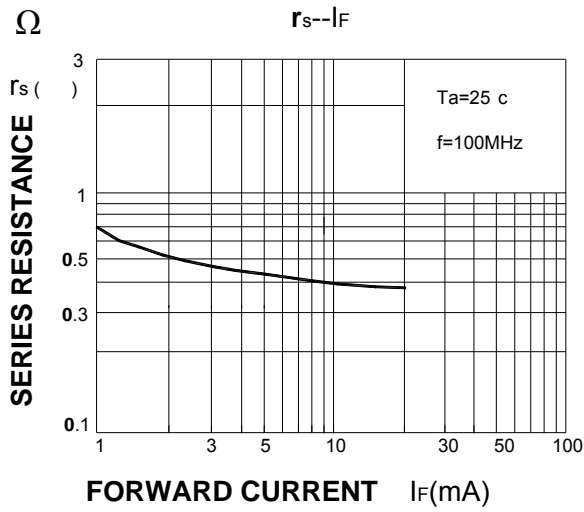
Parameter	Symbol	Value	Unit
Reverse Voltage	$V_R$	30	V
Forward Current	$I_F$	100	mA
Junction Temperature	$T_J$	125	$^\circ\text{C}$
Storage Temperature Range	$T_{STG}$	- 55 to + 125	$^\circ\text{C}$

### Electrical Characteristics ( $T_a = 25^\circ\text{C}$ )

Parameter	Symbol	Min.	Max.	Unit
Forward Voltage at $I_F = 2\text{ mA}$	$V_F$	-	0.85	V
Reverse Current at $V_R = 15\text{ V}$	$I_R$	-	0.1	$\mu\text{A}$
Reverse Voltage at $I_R = 1\text{ }\mu\text{A}$	$V_R$	30	-	V
Total Capacitance at $V_R = 6\text{ V}$ , $f = 1\text{ MHz}$	$C_T$	-	1.2	pF
Series Resistance at $I_F = 2\text{ mA}$ , $f = 100\text{ MHz}$	$r_s$	-	0.9	$\Omega$



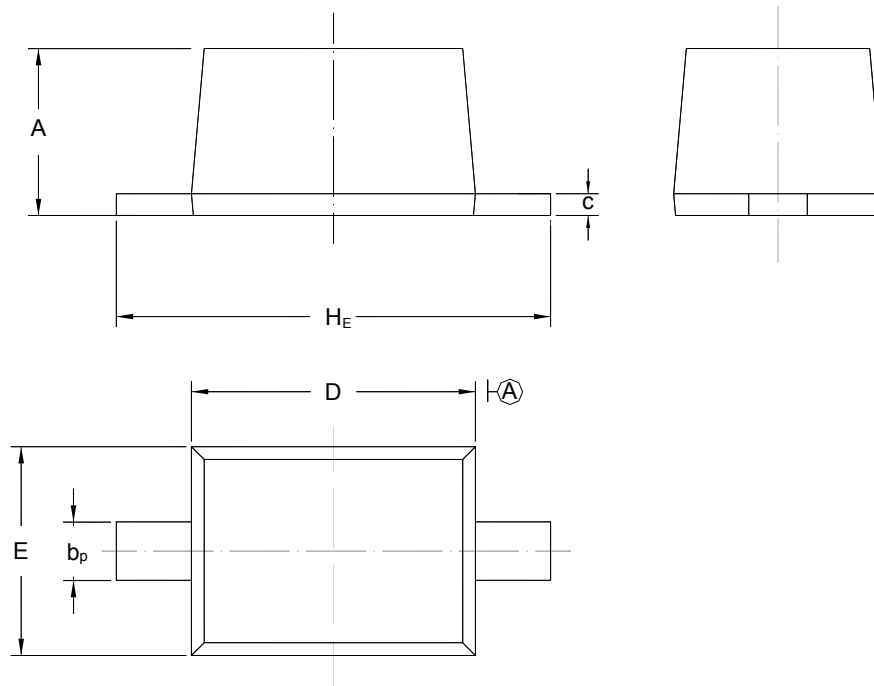
### Ratings And Characteristic Curves





### Package Outline

SOD-323



UNIT	A	$b_p$	C	D	E	$H_E$
mm	1.10 0.80	0.40 0.25	0.15 0.10	1.80 1.60	1.35 1.15	2.80 2.30

### Ordering information

Device	Package	Shipping
1SS314	SOD-323	3000/Tape&Reel(7inches)